



# Pests and Pesticides in Child-serving Facilities: An IPM Newsletter

## Looking for Help Managing Fire Ants on School Properties?

By Karen M. Vail, Professor, Entomology & Plant Pathology, University of Tennessee, Knoxville

Look no further. We have many resources to help you develop a program to manage fire ants at schools.

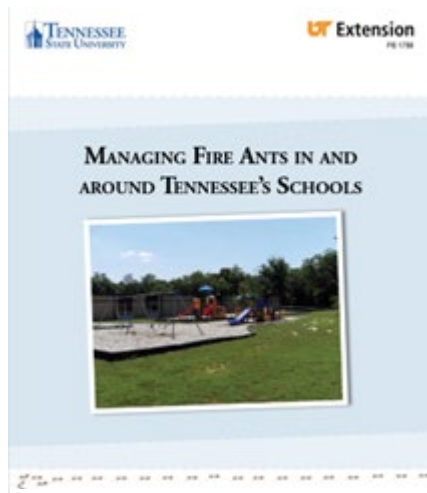


Figure 1. Extension Publication PB1788 *Managing Fire Ants in and around Tennessee's Schools*, <https://fireants.tennessee.edu/wp-content/uploads/sites/208/2020/11/Management-treatment-PB1788.pdf>

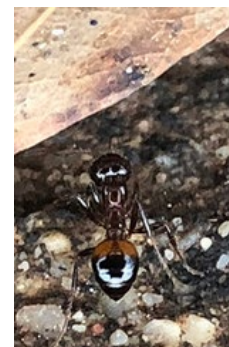


Figure 2. *Fire Ant Products for Tennessee's Schools by Formulation, Active Ingredient, Application Method and Use Site*, <https://fireants.tennessee.edu/wp-content/uploads/sites/208/2020/11/Publications-AvailableProductsForSchools-W649.pdf>

And an entire website devoted to the biology, identification and management of fire ants in Tennessee, using a very imaginative website name, FIRE ANTS IN TENNESSEE, with a similar URL, <https://fireants.tennessee.edu/>.

**In addition, we are conducting a hands-on fire ant workshop next Tuesday, May 26, at the Greenway Farm Conference Center, 4960 Gann Store Rd, Hixson, TN. See the flyer on the next page for details.**

**We are expecting TDA pesticide CEUs in many categories, so we hope to see you there.**



**Hands-On Experience Managing Fire Ants, May 26, 2026 at the Greenway Farm Conference Center, [tiny.utk.edu/fireant](https://tiny.utk.edu/fireant)**

### This issue

Fire Ant Resources	1
Fire Ant Control Workshop	2

 **Chattanooga, TN**



# FIRE ANT CONTROL WORKSHOP

*Time to brush up on your fire ant control strategies in the landscape?*

- **May 26<sup>th</sup>**
- **9 am - 12 pm est**
- **Pesticide Points Available**
- **Program fee: \$50  
(boxed lunch included)**
- **Registration required by May 25<sup>th</sup> at:  
[tiny.utk.edu/fireant](http://tiny.utk.edu/fireant)**

Green industry professionals, prepare for a hands-on, outdoor fire ant management workshop. The event will begin indoors with an informative fire ant pest presentation and then we'll proceed outside with a fire ant broadcast bait demonstration.

**Space is limited to 35 individuals, so be sure to register asap!** If you have any questions, do not hesitate to reach out to Haley Treadway at [haleytreadway@utk.edu](mailto:haleytreadway@utk.edu) or (423) 209-8560



This newsletter is produced by:

Karen Vail, Ph.D., Professor,  
Extension Urban Entomologist  
Entomology and Plant Pathology  
370 Plant Biotechnology Bldg.  
2505 E J Chapman Drive  
Knoxville, TN 37996-4560  
ph: (865) 974-8800  
email: [kvail@utk.edu](mailto:kvail@utk.edu)  
web: <https://schoolipm.tennessee.edu/>  
<https://utia.tennessee.edu/person/?id=15018>



Jennifer Chandler,  
Safety and Research Coordinator  
Entomology and Plant Pathology  
370 Plant Biotechnology Bldg.  
2505 E J Chapman Drive  
Knoxville, TN 37996-4560  
ph: (865) 974-7138  
Email: [jchand11@utk.edu](mailto:jchand11@utk.edu)

Comments or questions  
on this newsletter?

Contact [kvail@utk.edu](mailto:kvail@utk.edu)

Follow us on  
Facebook at  
<https://www.facebook.com/UrbanIPMTN>

Partial support for this newsletter provided by the USDA NIFA CPPM EIP grant (#2024-70006-43505) awarded to the University of Tennessee.

For more information about IPM in Tennessee schools and other facilities, or to view past issues of *Pests and Pesticides in Child-serving Facilities*, please visit <http://schoolipm.tennessee.edu>

### **NATIONAL IPM INFORMATION**

eXtension's Pests in the Home  
<https://pestsinthehome.extension.org/>

National School IPM  
[schoolipm.ifas.ufl.edu/](http://schoolipm.ifas.ufl.edu/)

IPM in Schools Texas  
<http://schoolipm.tamu.edu/>

IPM Institute of North America  
[www.ipminstitute.org/](http://www.ipminstitute.org/)

The Pest Defense for Healthy Schools Online IPM Training for School Employees  
[pestdefenseforhealthyschools.org](http://pestdefenseforhealthyschools.org)

EPA schools  
<http://www2.epa.gov/managing-pests-schools>

For further information about the IPM program at your school or in your county, contact your county Extension Agent or the school IPM Coordinator. For county agent contact information, please visit <https://utextension.tennessee.edu/office-locations-departments-centers/>

*The University of Tennessee is an EEO/AA/Title VI/Title IX/Section 504/ADA/ADEA institution in the provision of its education and employment programs and services. All qualified applicants will receive equal consideration for employment without regard to race, color, national origin, religion, sex, pregnancy, marital status, sexual orientation, gender identity, age, physical or mental disability, or covered veteran status.*

### **Precautionary Statement**

To protect people and the environment, pesticides should be used safely. This is everyone's responsibility, especially the user. Read and follow label directions carefully before you buy, mix, apply, store or dispose of a pesticide. According to laws regulating pesticides, they must be used only as directed by the label and registered for use in your state.

### **Disclaimer**

This publication contains pesticide recommendations that are subject to change at any time. The recommendations in this publication are provided only as a guide. It is always the pesticide applicator's responsibility, by law, to read and follow all current label directions for the specific pesticide being used. The label always takes precedence over the recommendations found in this publication.

Use of trade or brand names in this publication is for clarity and information; it does not imply approval of the product to the exclusion of others that may be of similar, suitable composition, nor does it guarantee or warrant the standard of the product. The author(s), the University of Tennessee Institute of Agriculture and University of Tennessee Extension assume no liability resulting from the use of these recommendations.

Programs in agriculture and natural resources, 4-H youth development, family and consumer sciences, and resource development. University of Tennessee Institute of Agriculture, U.S. Department of Agriculture and county governments cooperating. UT Extension provides equal opportunities in programs and employment.